

Stimulate  
HAIRDESIGN



STIMULATE



selene page 112

# the colourful art of hairdesign

(de)

Visionärer Stil und individuelle Klasse. Jedes Modell der Stimulate Collection ist ein ganz individueller Ausdruck von Persönlichkeit und Geschmack. Eine Hommage an Schönheit und Eleganz. Tauchen Sie mit uns in die bunte Welt von Stimulate ein. Hier trifft klassischer Chic auf mutige, moderne Ansätze der hohen Kunst des Hairdesigns. Lassen Sie sich von Stil und Ästhetik inspirieren. Neben all der kreativen Hingabe steht Stimulate auch für höchste Verarbeitungsqualität und besten Komfort. Jedes Modell ist ein Stück feinsten Hair Art. Entdecken Sie die Vielseitigkeit der neuen Collection und unsere Leidenschaft für Farben, Frisuren und Finesse.

(en)

Visionary style and ingenious class. Each model of the Stimulate collection is an individual expression of personality and taste. A tribute to beauty and elegance. Immerse yourself in the colourful world of Stimulate. Classic chic meets courageous, modern approaches in the art of hair design. Let yourself be inspired by style and aesthetics. In addition to all the creative devotion, Stimulate also stands for highest processing quality and best comfort. Each model is a piece of finest hair art. Discover the versatility of the new collection and our passion for colours, hairstyles and finesse.

(fr)

Un style visionaire et une grande classe. Les modèles de la collection Stimulate mettent en valeur de manière très personnelle la personnalité et le goût de chacun. Un hommage à la beauté et à l'élégance. Plongez avec nous dans le monde multiple de Stimulate où le chic classique rencontre une approche moderne et innovante de l'art du design capillaire. Laissez-vous inspirer par le style et l'esthétique. Outre le grand soin apporté à la créativité, la collection Stimulate propose un confort et une qualité de finition exceptionnels. Chaque modèle est une oeuvre d'art. Découvrez la polyvalence de notre collection et notre passion pour les couleurs, les coupes et les détails.

(it)

Stile visionario e classe geniale. Ogni modello della collezione Stimulate è l'espressione individuale di personalità e gusto. Un omaggio a bellezza ed eleganza. Entri con noi nel mondo ricco di colori di Stimulate. Un mondo in cui raffinati classici incontrano stravaganti e moderni look di arte e design. Si lasci ispirare da stile ed estetica. Oltre alla creatività Stimulate garantisce la più alta qualità nelle lavorazioni e il massimo comfort. Ogni modello è un'opera d'arte del capello. Scopra la versatilità della nuova collezione e la nostra passione per i colori, le pettinature e la raffinatezza.

(es)

Estilo visionario y clase ingeniosa. Cada modelo de la colección Stimulate es una expresión muy individual de personalidad y gusto. Un homenaje a la belleza y la elegancia. Sumérjase junto con nosotros en el mundo colorido de Stimulate. En el arte del diseño del cabello, el clásico chic se encuentra con toques audaces y modernos. Déjese inspirar por el estilo y la estética. Además de toda la dedicación en la parte creativa, Stimulate representa la más alta calidad en su elaboración y el mejor confort. Cada modelo es una pieza de arte de cabello muy fino. Descubra la versatilidad de la nueva colección y nuestra pasión por la fineza, los colores y los peinados.

(ru)

Провидческий стиль и высокий класс. Каждая модель коллекции Stimulate являет собой очень индивидуальное выражение личности и вкуса. Дань красоте и элегантности. Погрузитесь в красочный мир Stimulate. Роскошь классики идет навстречу смелым, современным подходам к дизайну волос высокого класса. Поддайтесь вдохновению стилем и эстетикой. Stimulate это не только преданность творчеству, но и высочайшее качество и максимальный комфорт. Каждая модель - это шедевр. Откройте для себя разнообразие новой коллекции и нашу страсть к цветам, прическам и утонченности.



## festa <sup>☆☆☆☆☆☆</sup>deluxe

espresso mix • darkchocolate mix • chocolate mix • mocca lighted • lightbernstein rooted • darksand rooted • caramel mix • sandyblonde rooted • lightchampagne rooted • hotchilli rooted • salt/pepper mix • snow mix

## festa <sup>☆☆☆☆</sup>mono

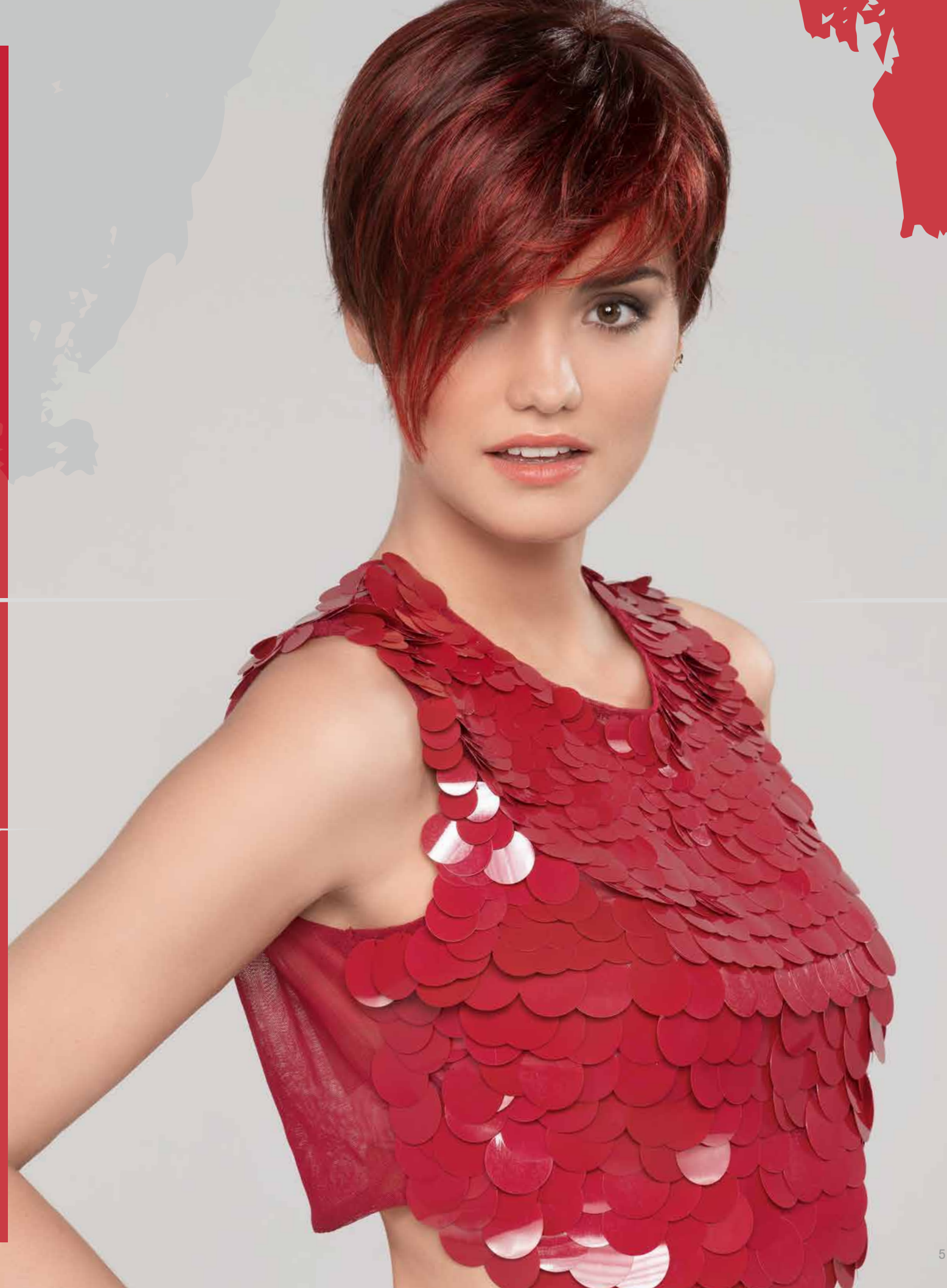
espresso mix • chocolate rooted • nougat rooted • mocca mix • bernstein rooted • sand rooted • sandyblonde mix • champagne rooted • platinblonde mix • darkauburn mix • safranred rooted • ginger rooted • darksnow mix • snow mix

## festa <sup>☆☆☆</sup>

black • espresso mix • coffee lighted • chocolate mix • hazelnut mix • tobacco rooted • bernstein rooted • sandmulti rooted • darksand rooted • lighthoney mix • champagne rooted • platin mix • aubergine mix • auburn rooted • **flame mix**

## festa <sup>☆☆☆</sup>petite

darkchocolate mix • chocolate mix • mocca mix • sand mix • caramel mix • sandyblonde mix • champagne rooted • auburn mix



# toscana <sup>★★★★</sup> mono

espresso mix • darkchocolate mix • chocolate mix • hothazelnut mix • tobacco rooted • darksand rooted • lightcaramel rooted • lightchampagne rooted • platinblonde mix • hotchilli mix • pearlblonde rooted • **darksnow mix**





uno <sup>☆</sup>

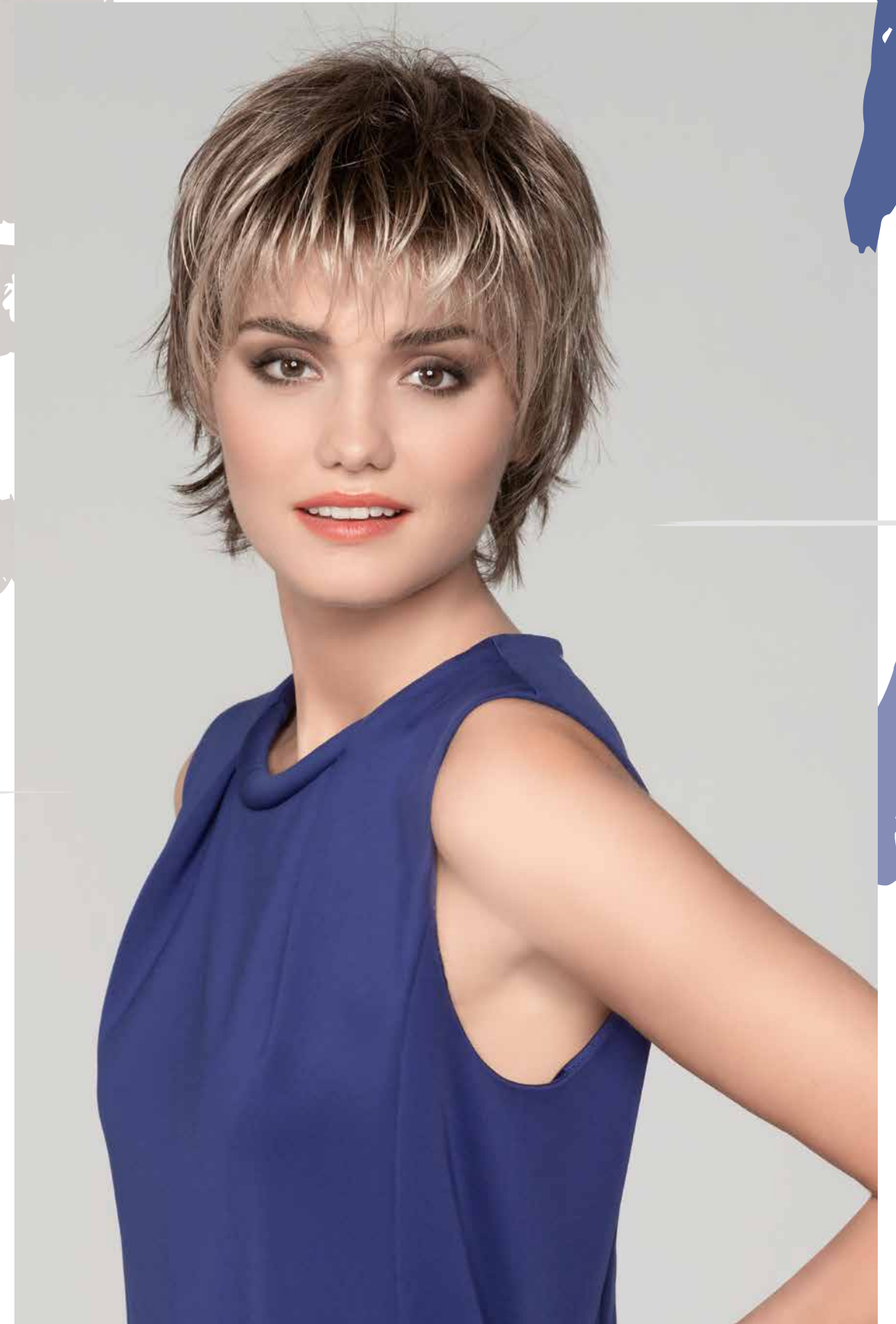
espresso mix • darkchocolate mix •  
chocolate mix • bernstein lighted •  
sandmulti rooted • caramel lighted •  
champagne rooted • platinblonde mix  
• **hotflame lighted** • cognac rooted





elba <sup>★★★★</sup> mono

espresso mix • chocolate rooted • hazelnut rooted •  
mocca rooted • tobacco rooted • lightbernstein rooted •  
**darksand rooted** • caramel rooted • lighthoney rooted  
• champagne rooted • auburn rooted





## amer \*\*

espresso mix • chocolate mix •  
hotmocca rooted • **tobacco rooted** •  
darksand rooted • lighthoney rooted •  
champagne rooted • auburn rooted •  
safranred rooted





sarria <sup>★★★★</sup>mono

darkchocolate mix • chocolate mix • hazelnut rooted • nougat rooted • mocca rooted • lightbernstein rooted • sandmulti mix • sand mix • sandyblonde rooted • **champagne rooted** • darkauburn rooted • pearlblonde rooted







## magica ☆

black • black/violet • espresso mix • darkchocolate mix • chocolate mix • hotmocca mix • tobacco mix • darksand rooted • sand rooted • sandyblonde rooted • champagne mix • **aubergine mix** • fire mix • hotchilli mix • cinnamon mix

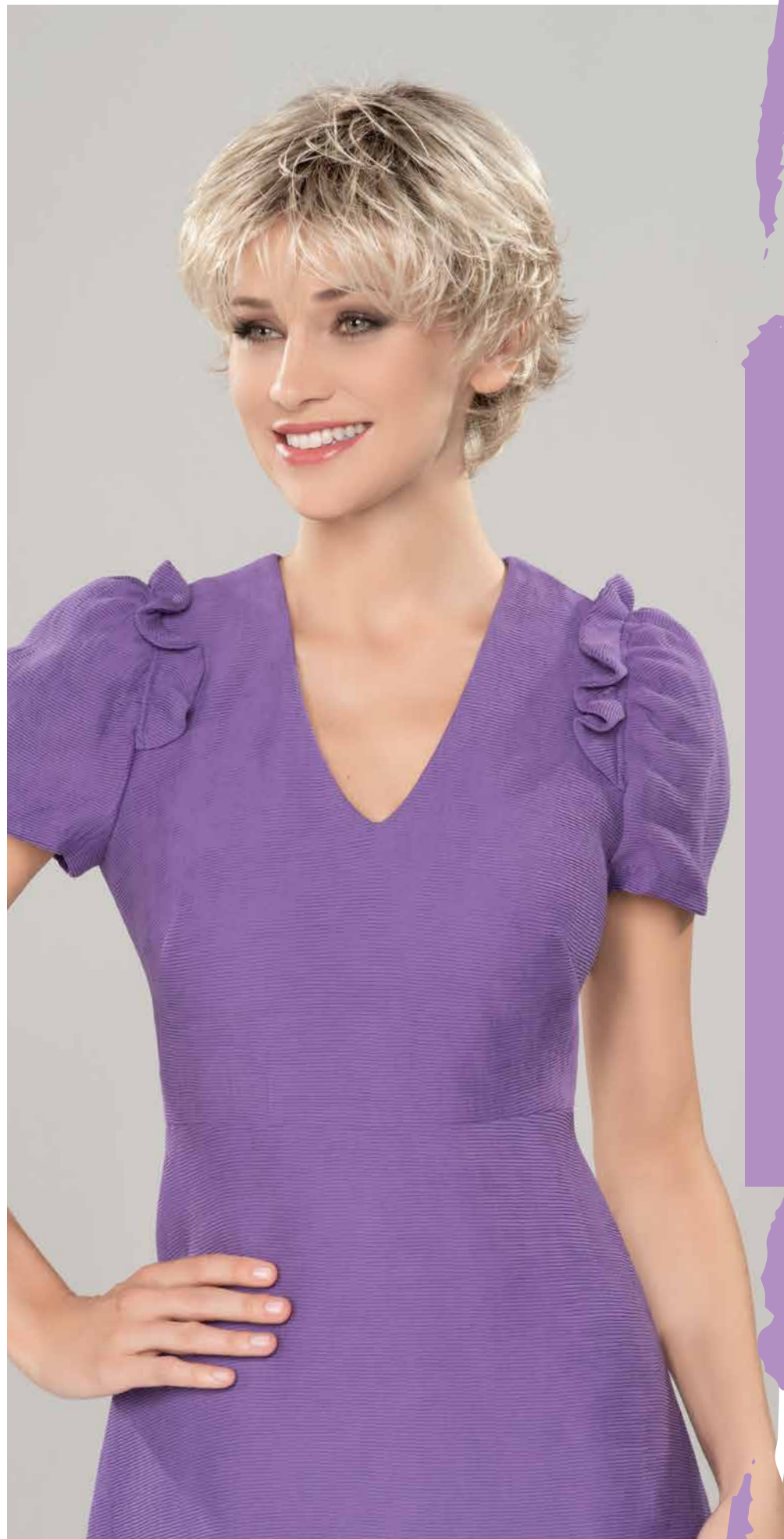




# STIMULATE



Amazing looks in brilliant colours.  
Watch out for the latest in hair art.



## lugano <sup>☆☆</sup>

espresso mix • chocolate  
rooted • hazelnut rooted •  
hotmocca mix • tobacco  
rooted • bernstein rooted •  
sandmulti rooted • darksand  
rooted • caramel rooted •  
**champagne rooted** •  
darkauburn mix



# maida \*\*

espresso mix • darkchocolate lighted • hotchocolate mix • hazelnut mix • bernstein rooted • **sandmulti rooted**  
• lightchampagne rooted • hotaubergine mix • darkauburn mix • hotchilli rooted • safranred rooted





## storia <sup>☆☆☆☆</sup> mono

chocolate mix • **hazelnut mix**  
• tobacco mix • lightbernstein  
rooted • sandmulti rooted •  
darksand rooted • sand mix  
• caramel mix • sandyblonde  
rooted • champagne rooted •  
auburn mix



## storia <sup>☆☆</sup>

espresso mix • chocolate  
mix • hazelnut mix •  
**hazelnut rooted** •  
bernstein mix •  
lightbernstein mix •  
sand mix • lighthoney  
mix • champagne mix •  
champagne rooted •  
darkauburn mix •  
hotflame mix •  
ginger rooted

## storia <sup>☆☆</sup> large

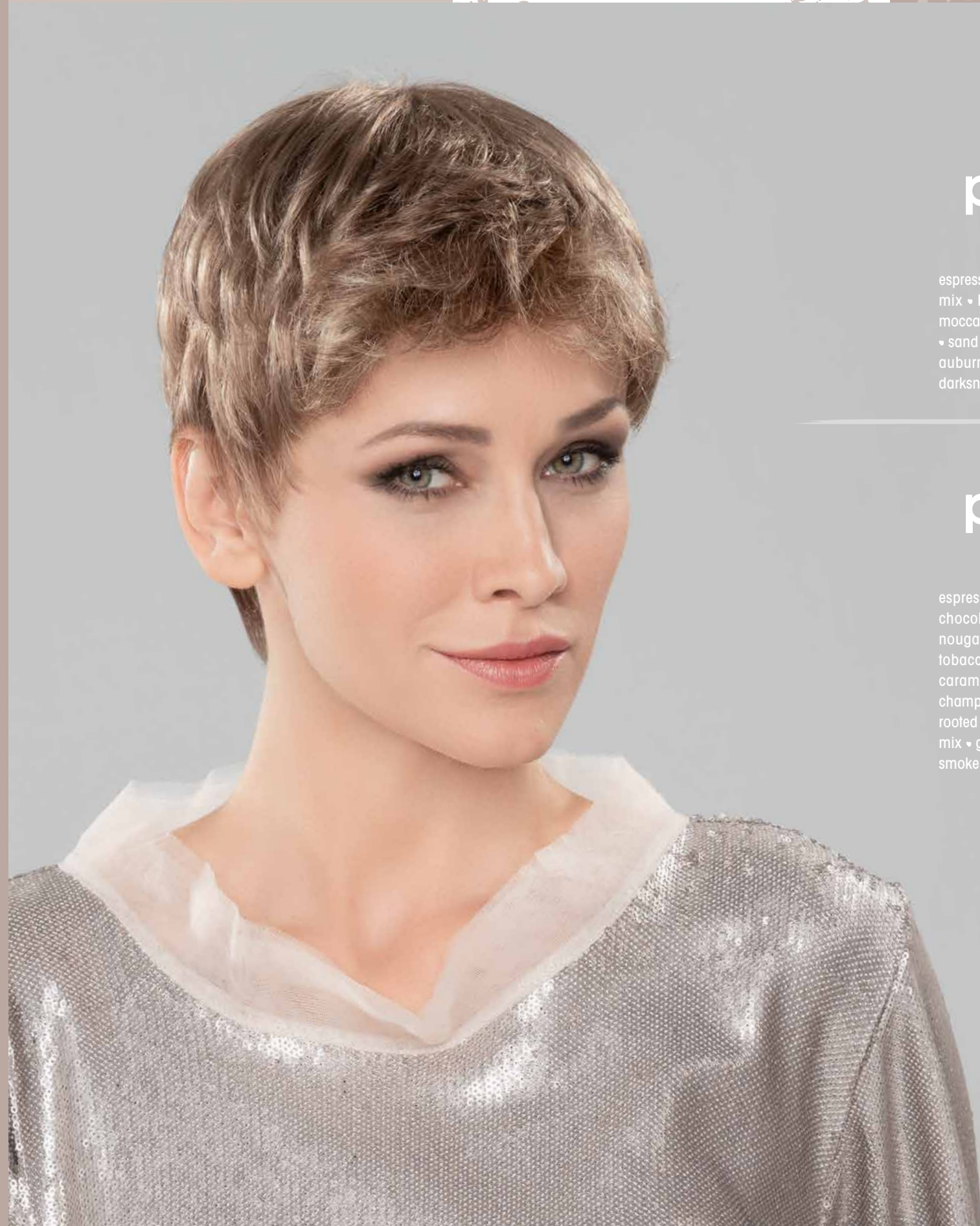
espresso mix • chocolate mix •  
hazelnut mix • bernstein mix •  
sand mix • champagne rooted  
• darkauburn mix • ginger  
rooted



# STIMULATE

Step up your style.  
Top comfort and quality.  
Stimulate is devoted  
to the highest standards.

uno page 08

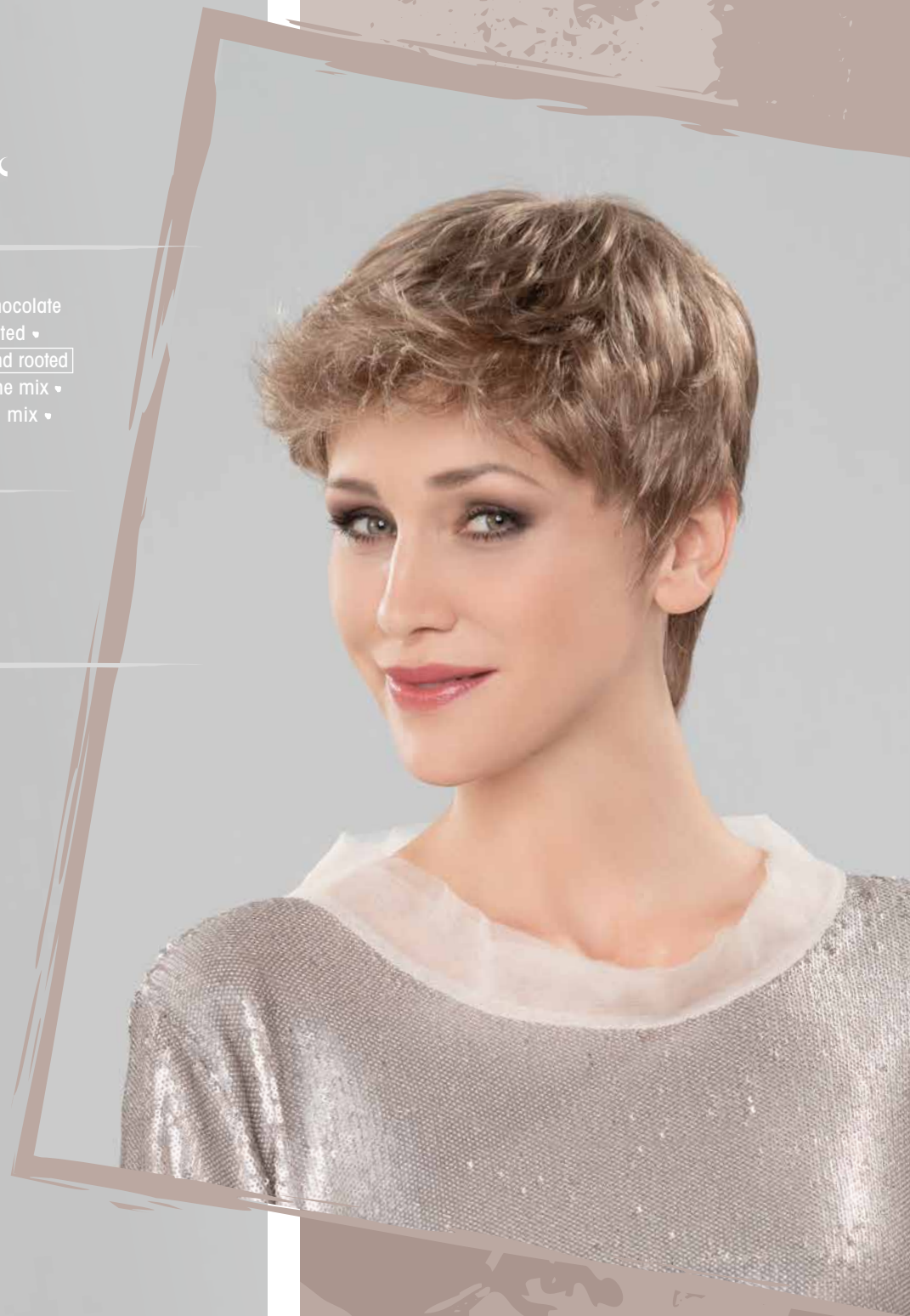


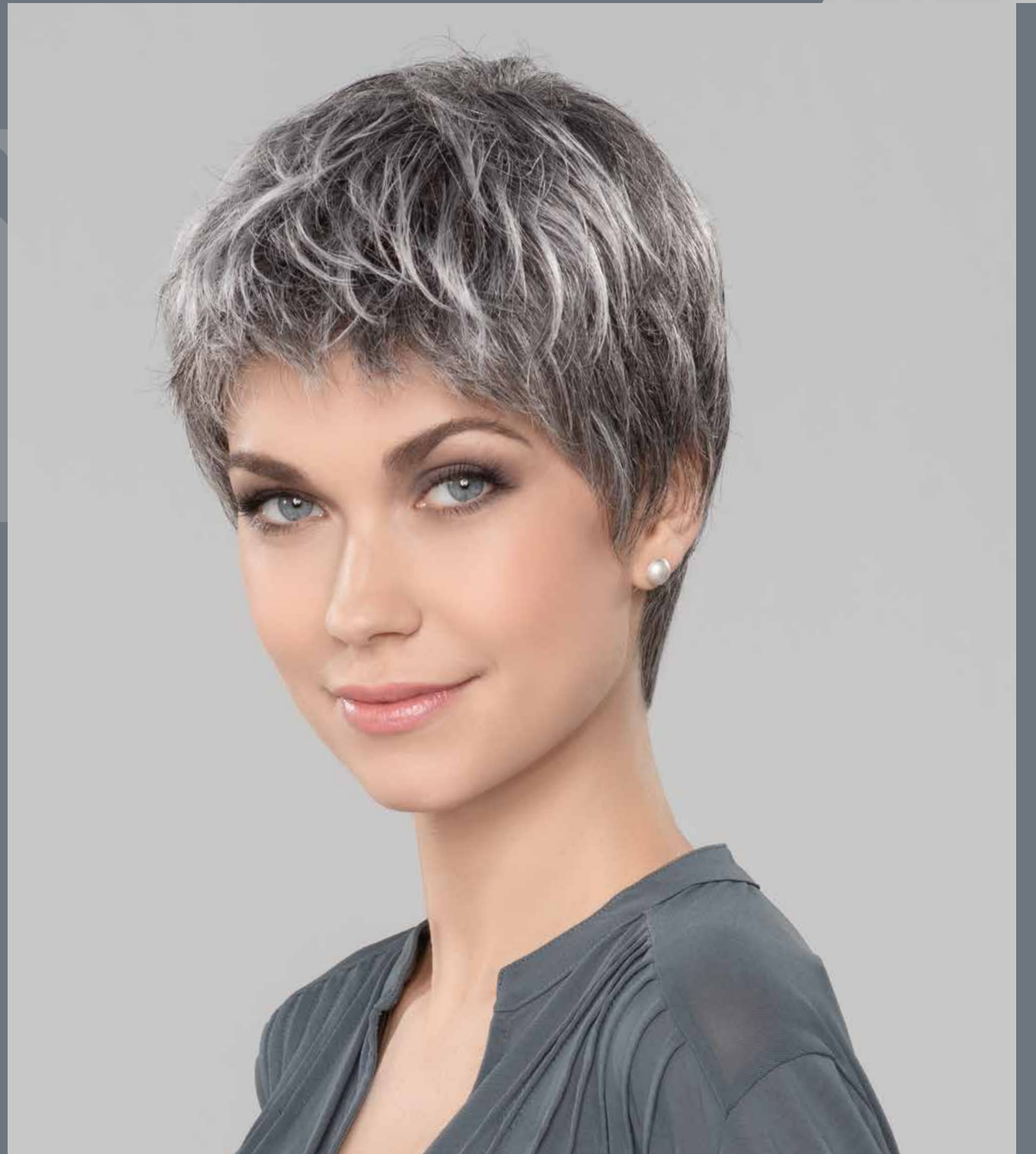
## porto <sup>★★★★</sup>mono

espresso mix • darkchocolate mix • chocolate mix • hotchocolate mix • nougat rooted • mocca mix • tobacco rooted • **darksand rooted** • sand mix • caramel mix • champagne mix • auburn mix • salt/pepper mix • pearl mix • darksnow mix • snow mix

## porto <sup>★★</sup>

espresso mix • darkchocolate mix • chocolate mix • hotchocolate mix • nougat rooted • lightmocca mix • tobacco rooted • darksand mix • caramel mix • sandyblonde rooted • champagne mix • lightchampagne rooted • aubergine mix • darkauburn mix • ginger rooted • pepper mix • smoke mix • silver mix





espresso mix • chocolate mix • mocca mix • bernstein mix • sand mix •  
champagne rooted • platinblonde mix • auburn rooted • **salt/pepper mix** •  
smoke rooted • snow mix • silver rooted



# alia <sup>☆☆</sup>

midnight black • espresso mix •  
darkchocolate mix • chocolate  
rooted • mocca rooted •  
lightbernstein rooted • darksand  
rooted • caramel rooted • sandy-  
blonde rooted • lightchampagne  
rooted • **aubergine mix** •  
hotchilli mix • mangored mix •  
salt/pepper mix • darksnow  
rooted • silver rooted



# alegra <sup>☆☆☆☆</sup> mono

espresso rooted • darkchocolate rooted • chocolate rooted • cinnamonbrown mix • nougat rooted • tobacco rooted • darksand rooted • sandyblonde rooted • lightchampagne rooted • hotcinnamon mix • cognac mix • stonegrey mix • pearl-blonde rooted • snow mix • **white mix**





## strada <sup>☆☆☆☆</sup> mono

espresso mix • darkchocolate mix • **coffeebrown mix**  
• hazelnut mix • lightbernstein mix • darksand mix •  
sandyblonde mix • champagne mix • auburn mix •  
salt/pepper mix • smoke mix • pearl mix • snow mix •  
silver mix

## strada <sup>☆☆☆☆</sup> large mono

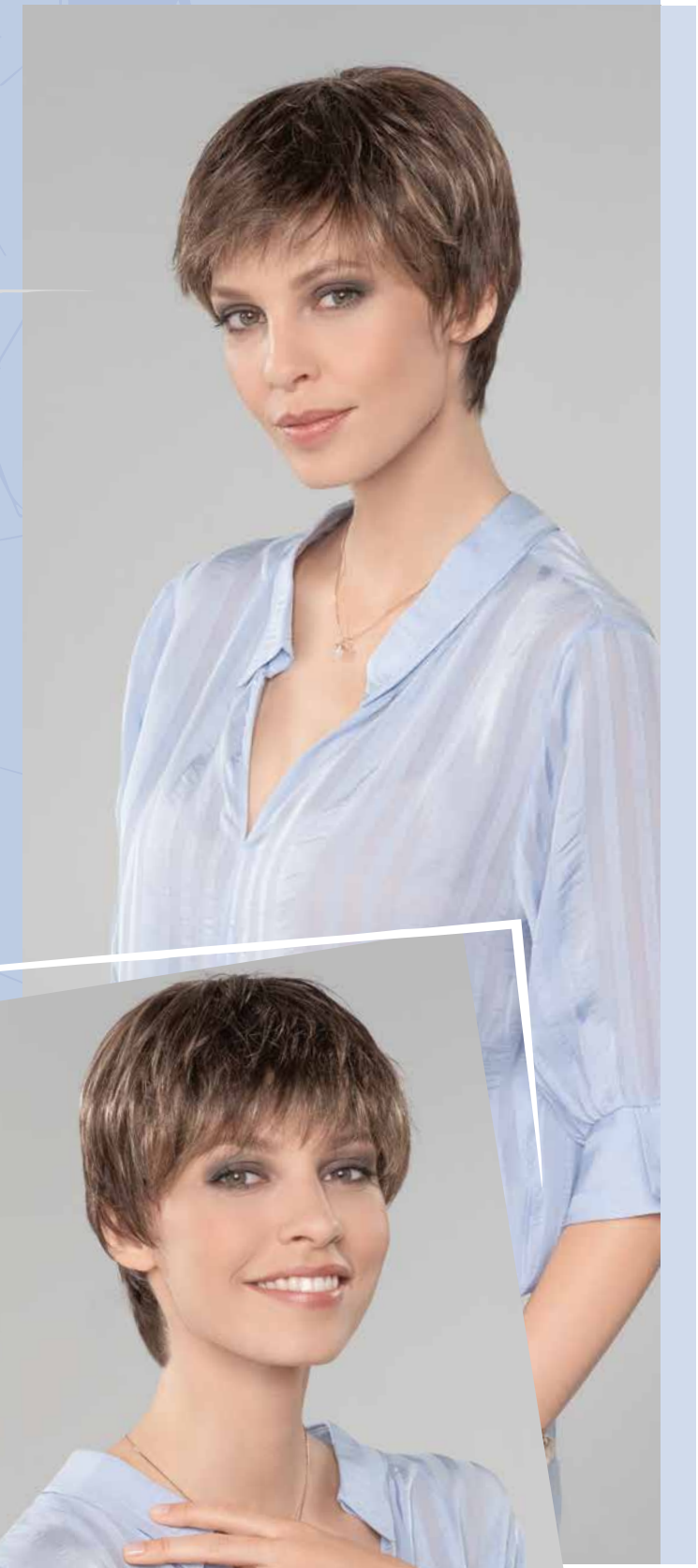
darkchocolate mix • **coffeebrown mix**  
• hazelnut mix • lightbernstein mix  
• darksand mix • champagne mix •  
smoke mix • snow mix

## strada <sup>☆☆</sup>

espresso mix • **coffeebrown mix** • chocolate mix •  
bernstein mix • sand mix • lighthoney rooted •  
champagne mix • auburn mix • salt/pepper mix •  
smoke mix • pearl mix • dark-snow mix • white mix

## strada <sup>☆☆</sup> petite

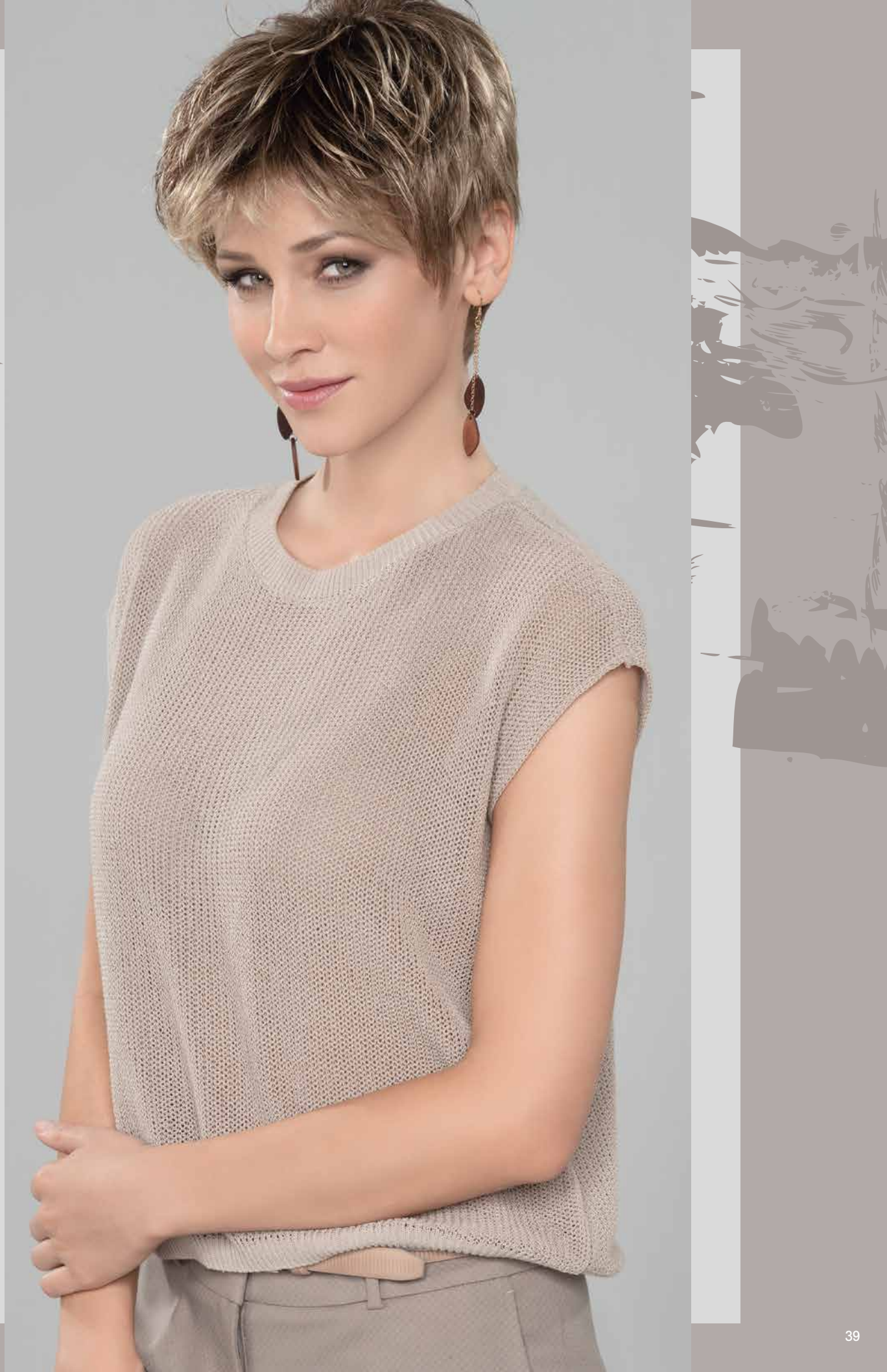
coffeebrown mix • chocolate mix  
• darkmocca mix • bernstein  
mix • sand mix • caramel mix •  
lighthoney mix • champagne  
mix • smoke mix • stonegrey  
mix • pearl mix • white mix





firenze ★★★  
mono

- espresso rooted • chocolate mix •
- hotchocolate mix • mocca rooted •
- tobacco lighted • lightbernstein rooted
- **sand rooted** • champagne rooted •
- stonegrey rooted • pearlblonde mix





# STIMULATE LATE

Having fun while looking fancy.  
With Stimulate cool trends  
are allways at your fingertips.



## cala <sup>☆☆</sup>“

espresso mix • chocolate mix •  
mocca lighted • lightbernstein  
rooted • champagne rooted •  
**platinblonde rooted** • aubergine  
mix • flame rooted • cinnamon  
mix • mango mix • salt/pepper  
mix • snow mix



cori ★★★★★☾  
deluxe

espresso mix • darkchocolate mix  
• chocolate mix • nougat rooted  
• mocca rooted • lightbernstein rooted  
• darksand rooted • sand mix •  
sandyblonde rooted • champagne  
mix • salt/pepper mix • silver mix •  
white mix

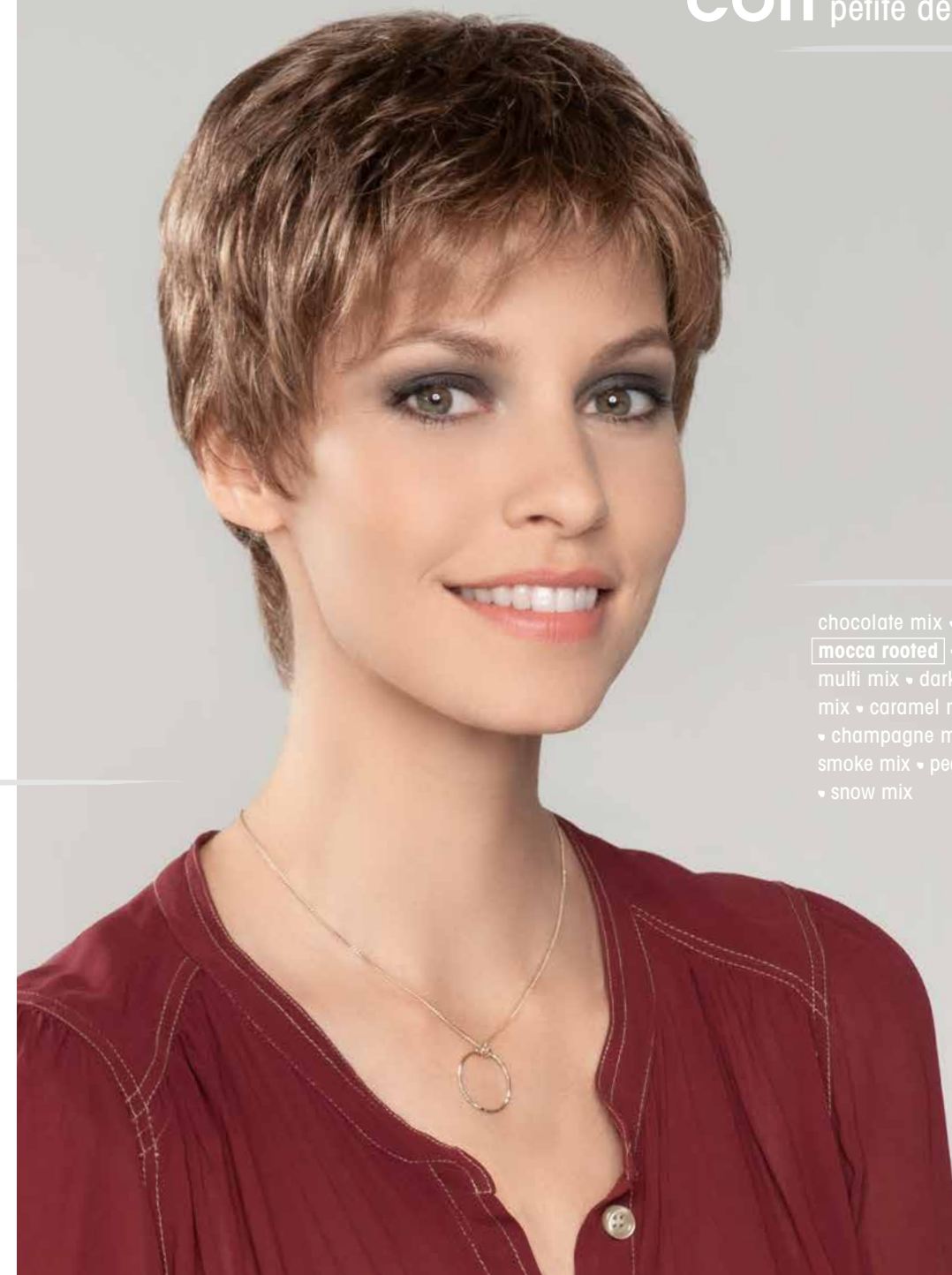
cori ★★★★★  
mono

darkchocolate mix • chocolate mix  
• hazelnut mix • **hotmocca mix** •  
lightbernstein rooted • sandmulti  
rooted • sand mix • champagne  
mix • platinblonde mix • auburn  
mix • salt/pepper mix • snow mix



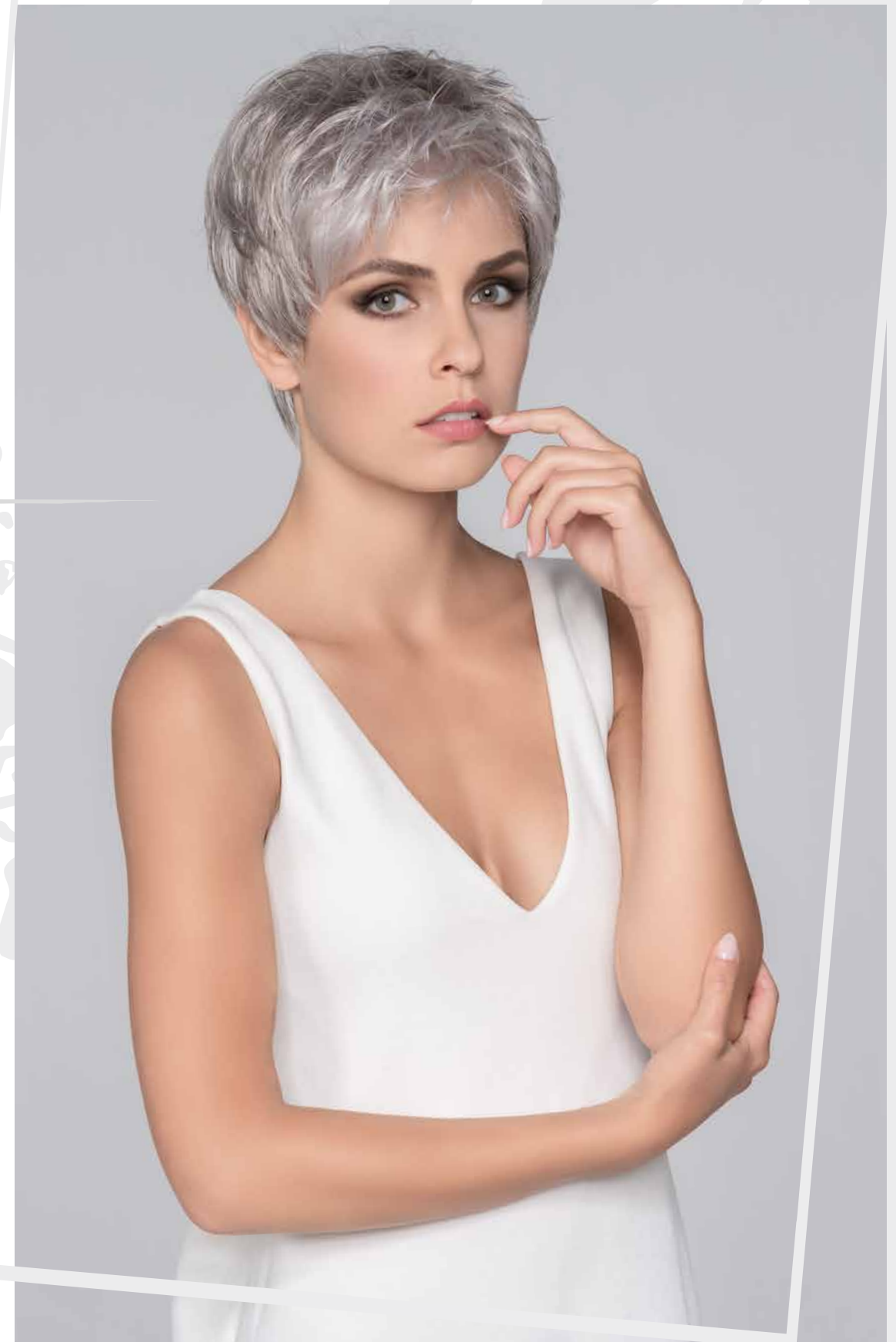
cori ★★★★★☾  
petite deluxe

chocolate mix •  
**mocca rooted** • sand-  
multi mix • darksand  
mix • caramel mix  
• champagne mix •  
smoke mix • pearl mix  
• snow mix



cento <sup>☆☆☆☆</sup> mono

hotepresso mix • darkchocolate mix • mocca mix • lightbernstein rooted • darksand rooted • sandyblonde rooted • champagne rooted • auburn mix • pearlblonde rooted • **snow mix**







espresso mix • chocolate rooted • hazelnut rooted • tobacco rooted •  
bernstein rooted • sandmulti rooted • sand rooted • sandyblonde rooted  
• **champagne rooted** • auburn rooted • ginger rooted • salt/pepper  
rooted • snow mix



# STIMULATE

All eyes  
on your elegant appearance.  
The en vogue looks by Stimulate  
have got you covered.

**azzurra** page 98



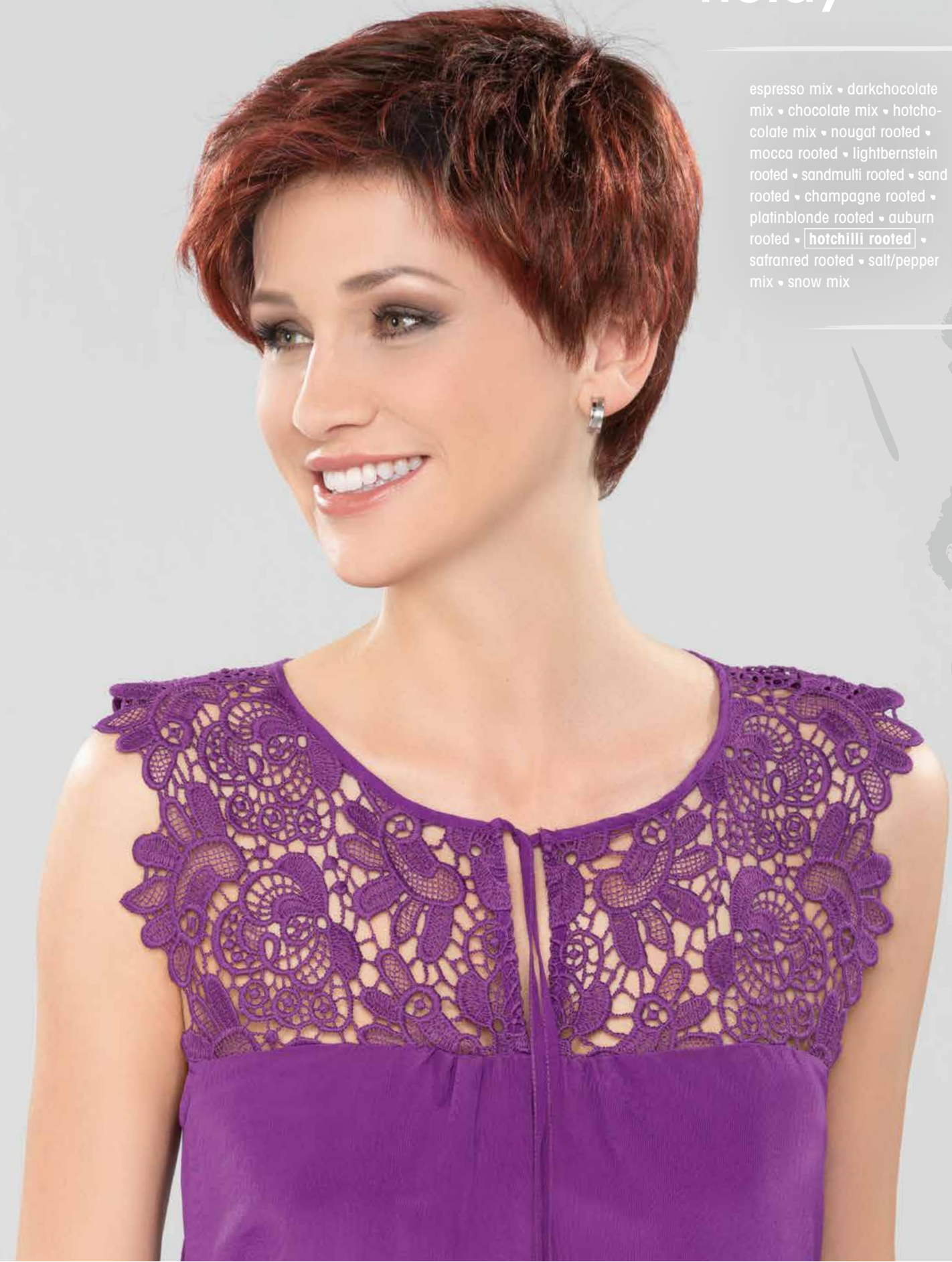


dublin <sup>☆☆☆</sup> plus

- espresso mix
- chocolate mix
- tobacco rooted
- bernstein rooted**
- sandmulti mix
- champagne mix
- lightchampagne mix
- darkauburn mix
- salt/pepper mix
- snow mix

# nolay <sup>☆☆</sup>

- espresso mix • darkchocolate mix • chocolate mix • hotchocolate mix • nougat rooted • mocca rooted • lightbernstein rooted • sandmulli rooted • sand rooted • champagne rooted • platinblonde rooted • auburn rooted • **hotchilli rooted** • safranred rooted • salt/pepper mix • snow mix





## beso <sup>☆☆</sup>

espresso rooted • darkchocolate rooted  
• chocolate rooted • mocca rooted •  
lightbernstein rooted • caramel rooted •  
sandyblonde rooted • champagne roo-  
ted • **lightchampagne rooted** • flame  
mix • hotcinnamon mix • cognac mix •  
salt/pepper mix • snow mix





## corsica \*\*

black • chocolate mix • hazel-  
nut mix • bernstein rooted •  
darksand rooted • sand mix •  
champagne mix • champagne  
rooted • aubergine mix • dark-  
auburn mix • auburn rooted •  
**flame mix** • ginger rooted



marina ☆☆☆☆  
comfort

espresso rooted • chocolate  
mix • hotchocolate mix •  
hazelnut mix • nougat mix •  
lightbernstein rooted •  
darksand mix • sand mix •  
lighthoney mix • sandyblonde  
rooted • lightchampagne  
rooted • salt/pepper rooted •  
**smoke mix** • snow mix





**feliz** ★★★★★  
mono

espresso mix • darkchocolate  
mix • chocolate mix • hazelnut  
rooted • mocca mix • bernstein  
rooted • **darksand rooted** •  
sand mix • sandyblonde rooted  
• champagne mix • auburn  
rooted • salt/pepper mix •  
smoke mix • snow mix

**feliz** ★★★★★  
large mono

espresso mix • chocolate mix • hazelnut  
rooted • mocca mix • **darksand rooted** •  
sandyblonde rooted • champagne  
mix • smoke mix • snow mix





# STIMULATE

A box full of inspiration.  
Stimulate delivers the best case  
scenario of style and quality.

**bia** page 84

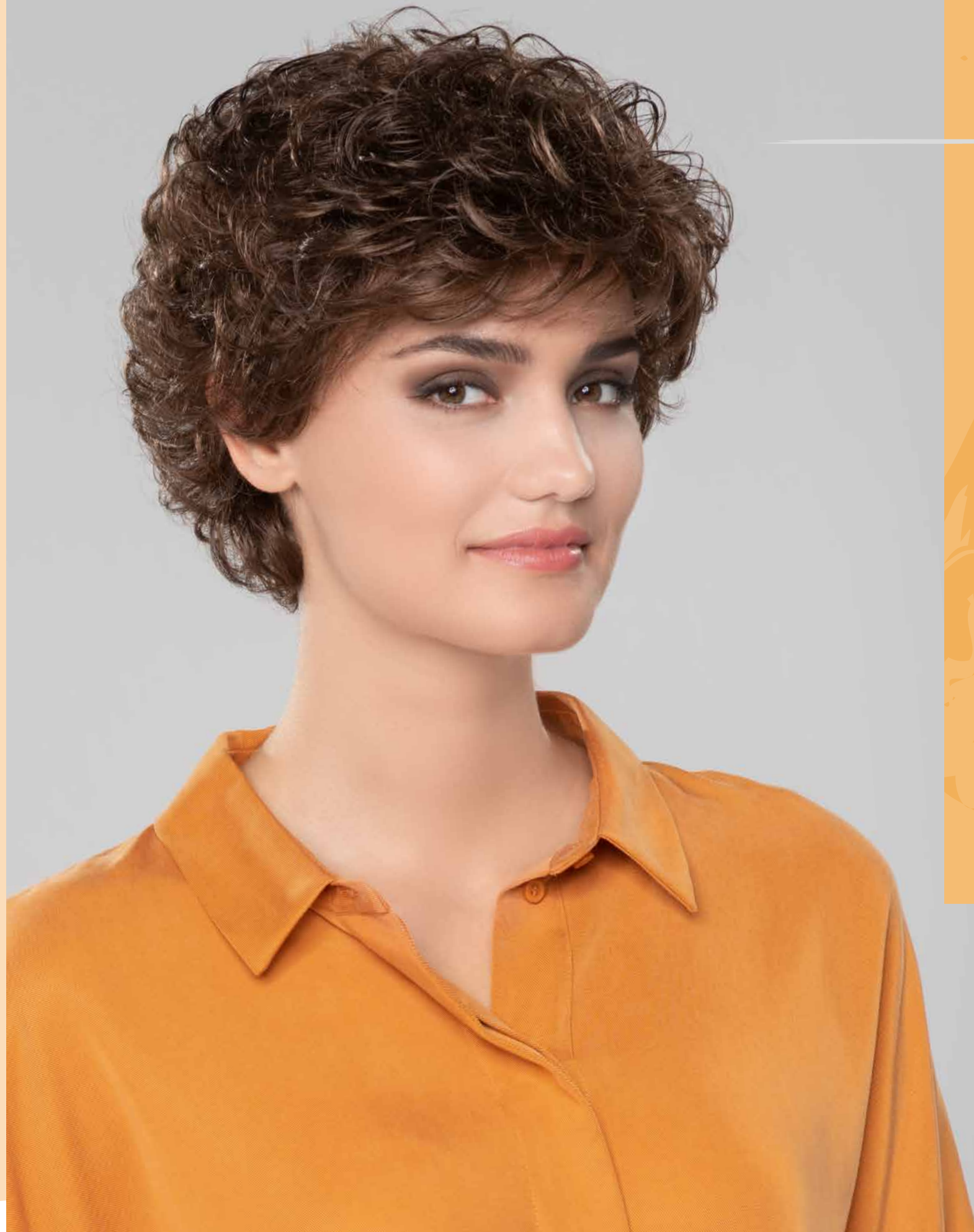




fauna <sup>☆☆☆☆</sup>mono

- darkchocolate mix • chocolate mix • hazelnut mix • mocca rooted • **lightbernstein rooted** • darksand mix • sandyblonde rooted • champagne mix • salt/pepper mix • smoke mix • pearl mix • snow mix



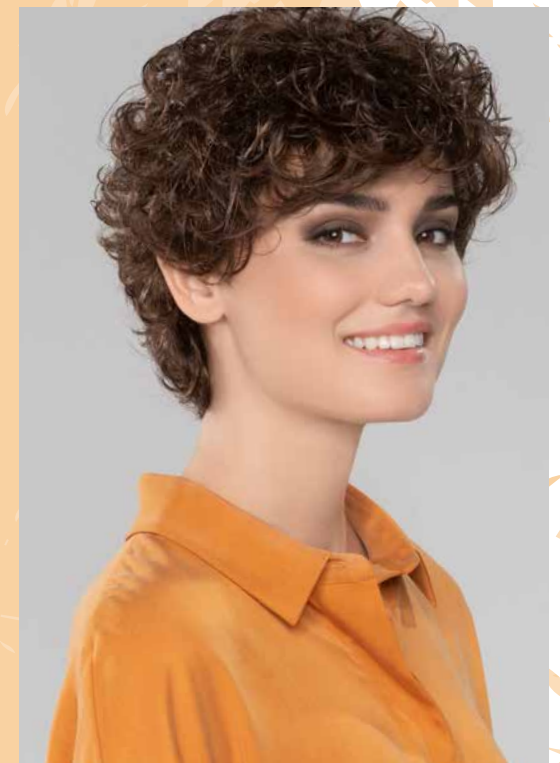


## ribera <sup>☆</sup>☾

black • espresso mix • **chocolate mix**  
• hazelnut mix • bernstein mix •  
sandmulti mix • darksand mix • sand  
mix • caramel mix • champagne mix •  
darkauburn mix • salt/pepper mix •  
snow mix

## ribera <sup>☆</sup>☾ large

espresso mix • **chocolate mix**  
• hazelnut mix • bernstein mix •  
darksand mix • champagne mix





## fata ☆☆☆

espresso mix • chocolate rooted  
• hazelnut rooted • mocca  
rooted • bernstein rooted • sand  
rooted • lightcaramel rooted  
• lightchampagne rooted •  
auburn rooted • **smoke rooted**  
• pearl rooted • snow mix



sorento <sup>★★★★</sup> mono

chocolate mix • mocca rooted  
• sandmulti mix • darksand  
mix • sand mix • sandyblonde  
mix • salt/pepper mix • dark-  
smoke mix • smoke mix •  
**pearl mix** • darksnow mix •  
snow mix • white mix





## armonia ☆☆☆

espresso mix • chocolate mix • hazelnut mix • mocca rooted •  
bernstein rooted • **sandmulti mix** • sand mix • champagne rooted •  
darkauburn mix • salt/pepper mix • smoke mix • snow mix

## armonia ☆☆☆ large

espresso mix • chocolate mix • hazelnut mix • mocca rooted •  
bernstein rooted • sand mix • champagne rooted • darkauburn mix •  
salt/pepper mix • smoke mix • snow mix



## armonia ☆☆☆☆☆ mono

espresso mix • darkchocolate  
mix • hazelnut mix • mocca  
mix • bernstein mix •  
**sandmulti mix** • sand mix •  
lighthoney mix • champagne  
mix • darkauburn mix •  
auburn mix





diana ★★★★★☾  
mono

espresso mix • darkchocolate mix •  
**chocolate mix** • hotmocca rooted •  
bernstein rooted • darksand mix •  
caramel rooted • sandyblonde rooted •  
lightchampagne mix • cinnamon mix •  
smoke mix • snow mix • silver mix



# STIMULATE

Amazing designs and an  
overwhelming palette of  
vivid colours. Discover the  
bright side of style.

**selene** page 112







amor <sup>☆☆☆☾</sup> mono

- black • darkchocolate
- rooted • chocolate mix
- **hotmocca rooted**
- bernstein rooted
- caramel rooted •
- sandyblonde rooted •
- champagne rooted •
- darkcherry mix





## lucca <sup>☆☆☆☆☆☾</sup> deluxe

espresso mix • **darkchocolate mix** •  
chocolate mix • hotchocolate mix • mocca  
mix • lightbernstein rooted • sand mix •  
caramel mix • sandyblonde rooted •  
champagne rooted • salt/pepper mix •  
snow mix

## lucca <sup>☆☆☆☆☆☾</sup> petite deluxe

chocolate mix • darknougat mix • mocca  
mix • caramel mix • sandyblonde rooted  
• champagne mix • pastelblonde mix •  
salt/pepper mix • lightpearl mix

## lucca <sup>☆☆☆☾</sup>

**darkchocolate mix** • chocolate rooted  
• hotmocca mix • bernstein rooted  
• sandyblonde rooted • champagne  
rooted • lightchampagne rooted •  
ginger rooted • silverblonde rooted





bia \*\*

espresso mix • darkchocolate mix • chocolate rooted • hazelnut  
mix • hotmocca rooted • bernstein rooted • lighthoney rooted  
• sandyblonde rooted • lightchampagne rooted • safranred  
rooted • **ginger rooted**



prado <sup>☆☆☆☾</sup>  
mono

espresso mix • darkchocolate mix •  
**chocolate rooted** • hotchocolate  
mix • hazelnut mix • mocca mix •  
darksand mix • sand mix •  
champagne mix • lightchampagne  
mix • ginger rooted • pearl rooted •  
smoke rooted • silver mix

prado <sup>☆☆☆☾</sup>  
petite

espresso mix • chocolate mix •  
mocca mix • darksand mix • sand  
mix • champagne mix



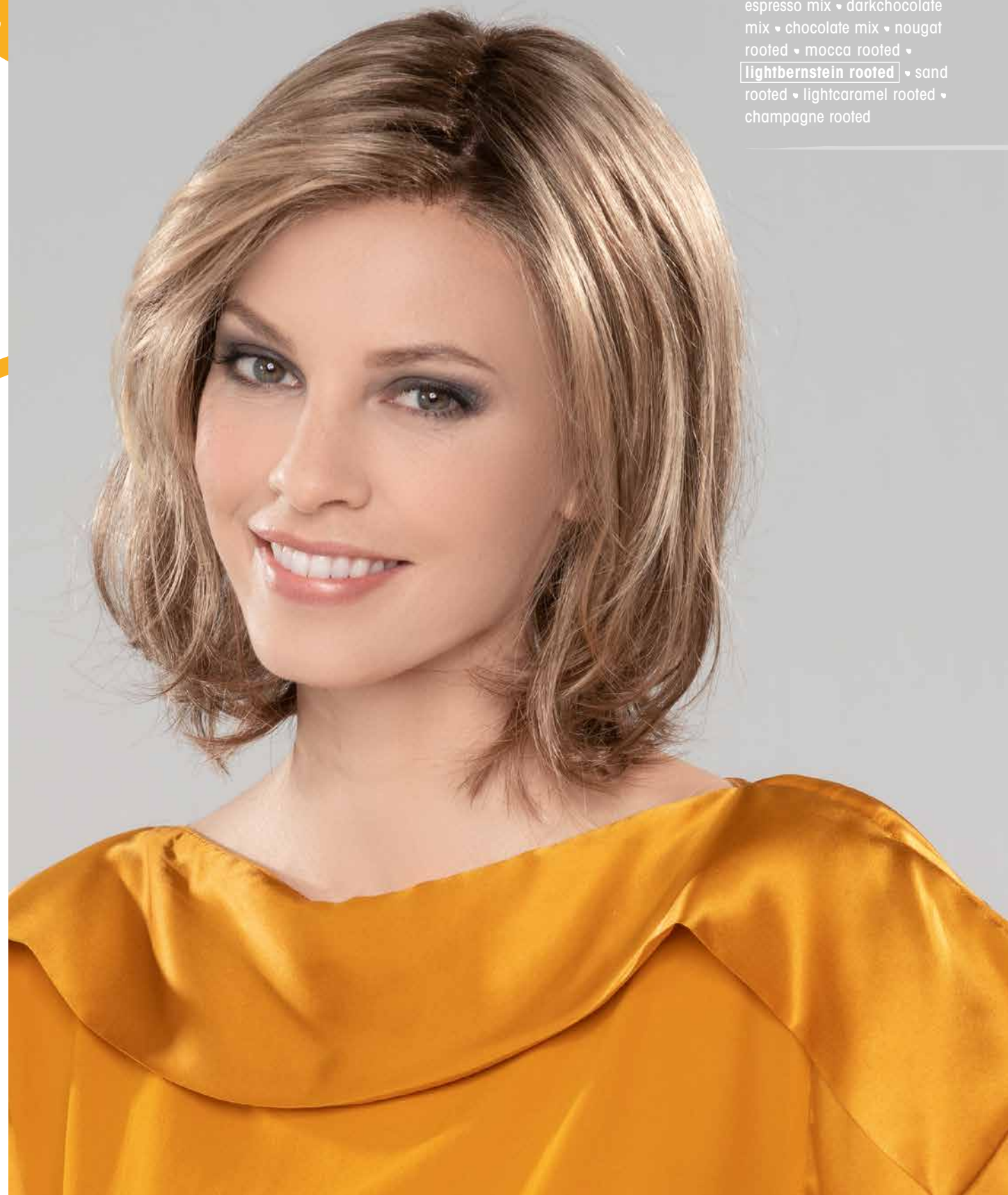
# cirella <sup>☆☆☆☾</sup> mono

espresso mix • darkchocolate mix  
• chocolate mix • mocca mix •  
**lightbernstein rooted** • sand mix  
• lighthoney rooted • champagne  
rooted • hotchilli mix



kimera <sup>☆☆☆☆☆</sup>deluxe

espresso mix • darkchocolate  
mix • chocolate mix • nougat  
rooted • mocca rooted •  
**lightbernstein rooted** • sand  
rooted • lightcaramel rooted •  
champagne rooted





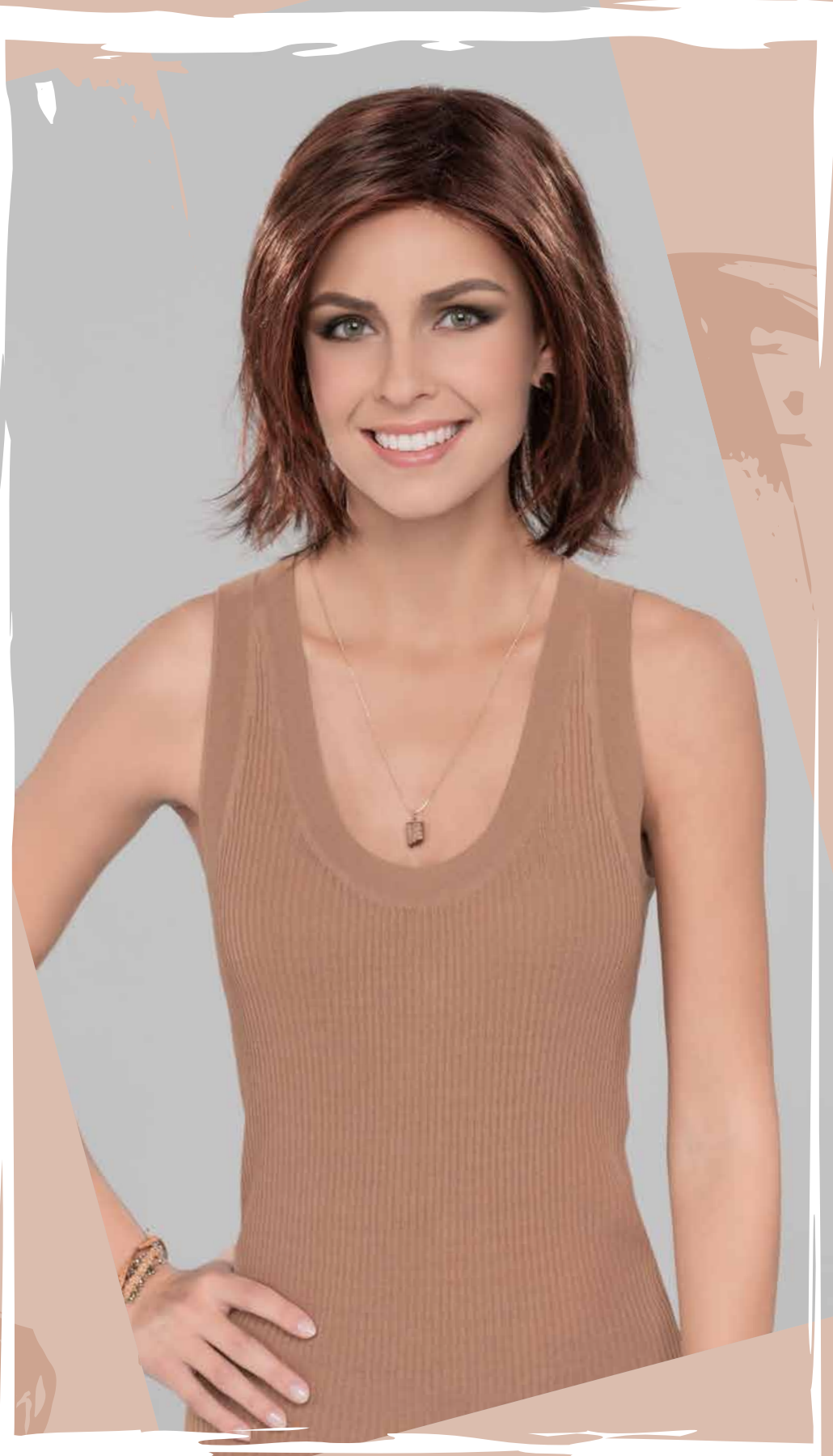
# STIMULATE

Fun, fashion and fanciness.  
Strike the pose and highlight your appearance  
with the young and trendy Stimulate looks.

**toscana** page 06

bonita <sup>☆☆☆☆</sup>  
mono

- espresso rooted
- chocolate rooted
- hazelnut mix
- mocca rooted
- tobacco rooted
- sand rooted
- caramel rooted
- sandyblonde rooted
- pastel-blonde mix
- hotchilli mix**





traviesa <sup>☆☆☆☆</sup> mono



espresso rooted • chocolate rooted • cinnamonbrown mix •  
hotmocca rooted • **lightbernstein rooted** • pastelblonde  
rooted • cognac rooted • pearlblonde rooted

azzurra <sup>☆☆☆</sup> mono

black • espresso mix • chocolate  
mix • cinnamonbrown rooted •  
mocca mix • bernstein rooted •  
**sand rooted** • lighthoney rooted  
• sandyblonde rooted • light-  
champagne rooted • salt/pepper  
mix • silverblonde rooted



# calliope ☆

black • espresso mix • chocolate rooted • hotmocca  
rooted • bernstein rooted • lighthoney rooted •  
champagne rooted • **auburn rooted** • ginger rooted



# STIMULATE



Trends keep moving. Stay ahead! Natural beauty is always in fashion.

cassana <sup>☆☆☆☆☆☆☆☆</sup> deluxe

espresso mix • chocolate mix •  
hotchocolate mix • **mocca mix**  
• lightbernstein rooted • sand mix  
• lighthoney mix • sandyblonde  
rooted • champagne mix

cassana <sup>☆☆☆☆</sup> petite mono

lightespresso mix • lightcoffee  
mix • chocolate mix • nougat  
mix • sand mix • lightcaramel  
mix • champagne mix •  
pastelblonde mix



# ninfa <sup>☆☆☆</sup>

espresso mix • darkchocolate  
mix • chocolate rooted •  
hotmocca rooted • bernstein  
rooted • sandyblonde rooted •  
**champagne rooted** • auburn  
rooted



artemide <sup>☆☆☆</sup> mono

espresso mix • darkchocolate mix  
• chocolate mix • **mocca mix**  
• lightbernstein rooted • sandy-  
blonde rooted • champagne  
rooted • darkauburn rooted



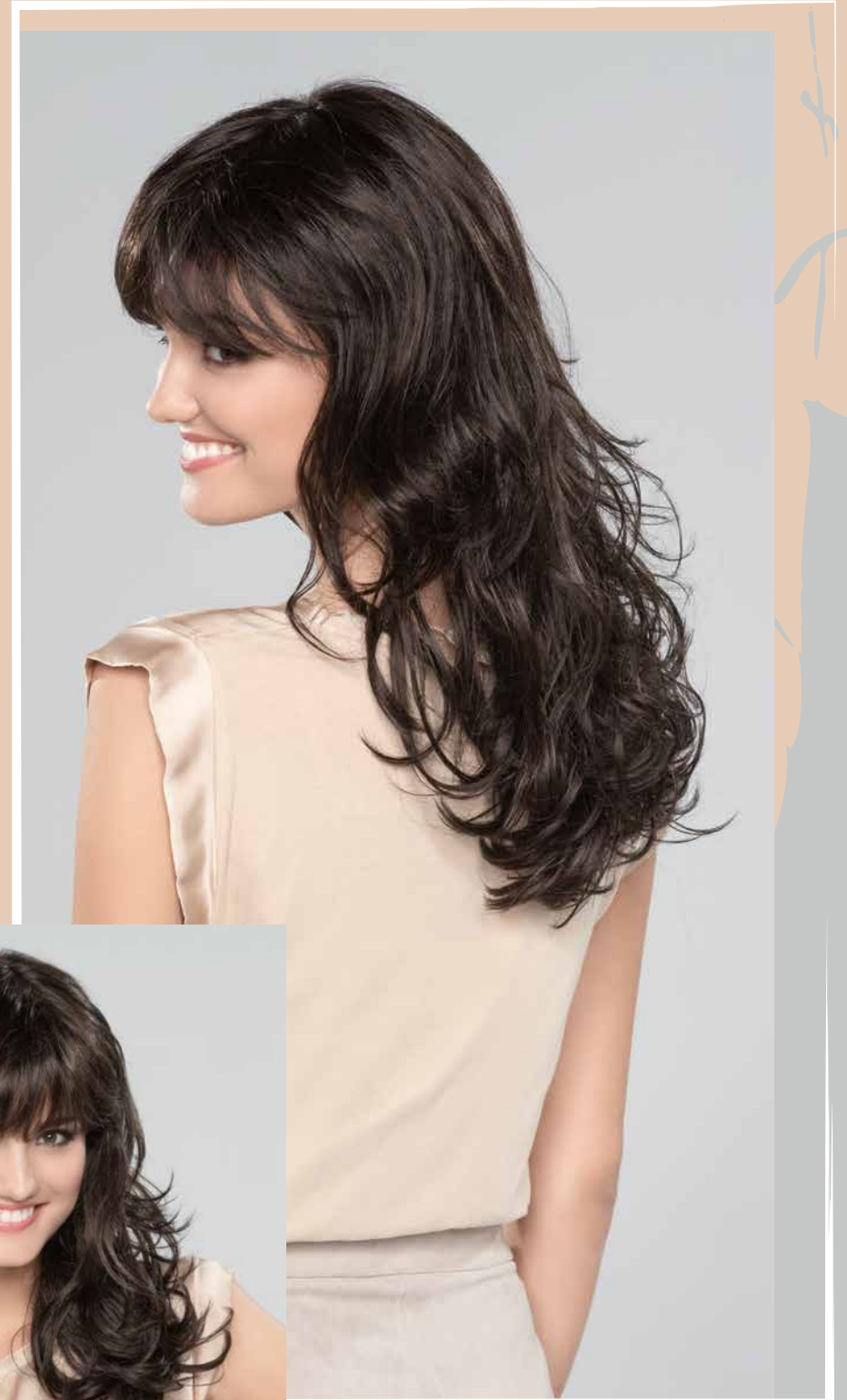
cielo ★★★★★☾  
deluxe

espresso mix • chocolate mix •  
hotmocca rooted • lightbernstein  
rooted • champagne rooted •  
**lightchampagne mix** • auburn mix





selene \*\*



espresso mix | darkchocolate mix • chocolate rooted  
• hotmocca rooted • bernstein rooted • lighthoney  
rooted • champagne rooted



baile ★★★☾  
mono

espresso rooted • chocolate  
rooted • mocca rooted •  
lightbernstein rooted •  
sandmulti rooted • caramel-  
2tone • lightcaramel rooted •  
**champagne rooted** •  
cinnamon mix • silverblonde  
rooted



fuerte <sup>☆☆☆☆</sup>  
mono



black • espresso mix • darkchocolate mix • chocolate  
rooted • lightbernstein rooted • darksand rooted •  
**lighthoney rooted** • champagne mix

# future hair

(de)

Innovatives Material mit exzellenten Eigenschaften. Future Hair besteht aus einer optimalen Mischung von feinem Echthaar und hitzeresistenten Synthetikfasern. Das Haar ist leicht, in vielen aufregenden Farben erhältlich und lässt sich sehr variabel stylen – sogar thermisch umformen. Dieser Mischhaarfaser gehört die Zukunft.

(en)

Innovative material with excellent attributes. Future Hair consists of an optimal blend of fine human hair and heat-resistant synthetic fibres. The hair is lightweight and available in many exciting colours. It can be styled variably and shaped thermally. The future belongs to this high-quality hair mix.

(fr)

Une matière innovante aux qualités exceptionnelles. Future hair se compose d'un mélange parfait de cheveux naturels et de fibres synthétiques résistantes à la chaleur. La chevelure est légère, disponible dans de nombreux coloris chatoyants et très facile à styler - pouvant même être travaillée à la chaleur. Ce mélange de fibres représente l'avenir.

(it)

Materiale innovativo dalle caratteristiche favolose. Il capello Future è costituito da una combinazione ottimale di fine capello vero e fibra sintetica fonabile. Si tratta di un tipo di capello leggero, disponibile in numerosi e bellissimi colori e che si lascia modellare persino con l'uso del calore, offrendo una grande varietà di stili. Questo capello misto appartiene al futuro.

(es)

Material innovador con excelentes propiedades. Future Hair consiste en una combinación óptima de cabello humano fino y fibras sintéticas resistentes al calor. El cabello es liviano, está disponible en muchos colores hermosos y se puede peinar de manera muy variable, incluso usando plancha. Esta mezcla de fibra capilar pertenece al futuro.

(ru)

Иновационный материал с превосходными свойствами. Волосы будущего состоят из оптимальной смеси тонких человеческих волос и термостойких синтетических волокон. Волосы лёгкие, доступны во многих интересных цветах и позволяют разнообразные стили укладки - даже термическую. Данное смешанное волокно - это будущее для альтернативных волос.



FUTURE  
HAIR

**new**  
TECHNOLOGY



# chopin <sup>☆☆☆☆</sup> future

espresso mix • darkchocolate mix • chocolate mix • mocca rooted • bernstein rooted • sand mix • lighthoney mix • **champagne rooted** • smoke mix • stonegrey mix



ravel <sup>☆☆☆☆☆</sup>  
future

espresso mix • darkchocolate  
mix • chocolate mix • mocca  
rooted • **bernstein rooted** •  
lightbernstein mix • sand mix •  
champagne rooted

**fh**  
FUTURE  
HAIR





FUTURE  
HAIR

# lehar <sup>☆☆☆☆</sup>future

espresso mix • darkchocolate mix • chocolate mix • mocca rooted • bernstein rooted • **lightbernstein mix** • caramel mix • champagne rooted • lightchampagne mix • auburn rooted • **salt/pepper mix** • silverblonde rooted



**vivaldi** ★★★★★  
future

espresso mix • darkchocolate mix •  
chocolate mix • mocca rooted • bernstein  
rooted • sand mix • **champagne rooted**  
• auburn rooted







puccini <sup>☆☆☆☆</sup> future

espresso mix • darkchocolate mix •  
chocolate mix • **mocca rooted**  
• bernstein rooted • lightbernstein  
mix • sand mix • champagne  
rooted • auburn rooted



# human hair

(de)

Echthaar garantiert ein höchstes Maß an Natürlichkeit und Qualität. Bei der Stimulate-Collection kommt ausschließlich hochwertiges Remy Echthaar zum Einsatz. Dieses bietet langanhaltenden Glanz, samtweiche Geschmeidigkeit und lässt sich sehr individuell stylen. Echthaar steht für natürlichen Luxus und Spitzenkomfort.

(en)

Human hair guarantees the highest degree of naturalness and quality. Only high-quality Remy Human Hair is used in the Stimulate collection. It offers long-lasting shine, velvety softness and can be styled very individually. Human hair stands for natural luxury and top comfort.

(fr)

Le cheveu naturel garantit un excellent niveau de qualité et un effet très naturel. Dans la collection Stimulate tous nos modèles se composent exclusivement de cheveux naturels de qualité supérieure Remy Hair. Cette dernière présente une garantie de couleur lumineuse, d'un touché extra soyeux et peut se styler de manière individuelle. Le cheveu naturel représente le luxe et le confort à l'état pur.

(it)

Il capello vero è garanzia di alti standard di naturalezza e qualità. Nella collezione Stimulate viene utilizzato esclusivamente capello remy di altissimo livello. Questo capello garantisce durevole brillantezza, setosa morbidezza e si lascia modellare per personalizzare ogni stile. Il capello vero è l'emblema del lusso naturale e del comfort di prima classe.

(es)

El cabello real garantiza el más alto grado de naturalidad y calidad. La colección Stimulate utiliza solo cabello humano Remy de alta calidad. Éste ofrece un brillo duradero, una suavidad aterciopelada y se puede peinar muy individualmente. El cabello real representa un lujo natural y un máximo confort.

(ru)

Натуральные волосы гарантируют высочайшую степень естественности и качества. В коллекции Stimulate используются только высококачественные человеческие волосы качества Remy. Это гарантирует долговечный блеск, бархатистую мягкость и индивидуальность, благодаря разнообразной укладке. Натуральные волосы подчеркивают естественную красоту и комфорт.



REMY  
HUMAN  
HAIR

# monet ☆☆☆☆☆

espresso mix • darkchocolate mix • chocolate mix •  
teakbrown rooted • **mocca rooted** • bernstein mix •  
sand mix • sandyblonde rooted • champagne rooted





REMY  
HUMAN  
HAIR

## rossi ☆☆☆☆☆

espresso mix • darkchocolate mix •  
chocolate rooted • cinnamonbrown mix  
• mocca rooted • lightbernstein rooted •  
sand mix • **sandyblonde rooted**  
• champagne rooted • stonegrey mix •  
pearlgrey mix





# Verdi ★★★★★



REMY  
HUMAN  
HAIR

**espresso mix** • darkchocolate mix • chocolate mix • mocca rooted • darksand mix • sandy-blonde rooted • pastelblonde rooted • safranred mix • stonegrey mix • pearlgrey mix





REMY  
HUMAN  
HAIR



moliere ★★★★★★★  
tec

espresso mix • darkchocolate  
mix • **chocolate mix** • mocca  
rooted • bernstein mix • sand  
mix • sandyblonde rooted •  
champagne rooted

# gauguin ★★★★★

- espresso mix •
- darkchocolate mix •
- chocolate mix •
- hotchocolate mix •
- lightbernstein rooted**
- sandmulti mix •
- sandyblonde rooted •
- pastelblonde mix



REMY  
HUMAN  
HAIR





REMY  
HUMAN  
HAIR

## rousseau ★★★★★

espresso mix • darkchocolate mix •  
chocolate mix • hotchocolate mix •  
**lightbernstein rooted** • sandyblonde  
rooted • champagne rooted • light-  
champagne rooted







# STIMULATE LATE

From classic elegance to cutting-edge trends. Stimulate paints the whole picture of stylish looks.

**picasso** page 146



REMY  
HUMAN  
HAIR



picasso ★★★★★☾  
tec

- espresso mix
- darkchocolate mix
- chocolate mix
- **mocca rooted**
- bernstein rooted
- sandyblonde rooted
- champagne rooted
- pastelblonde mix
- softcopper rooted





REMY  
HUMAN  
HAIR

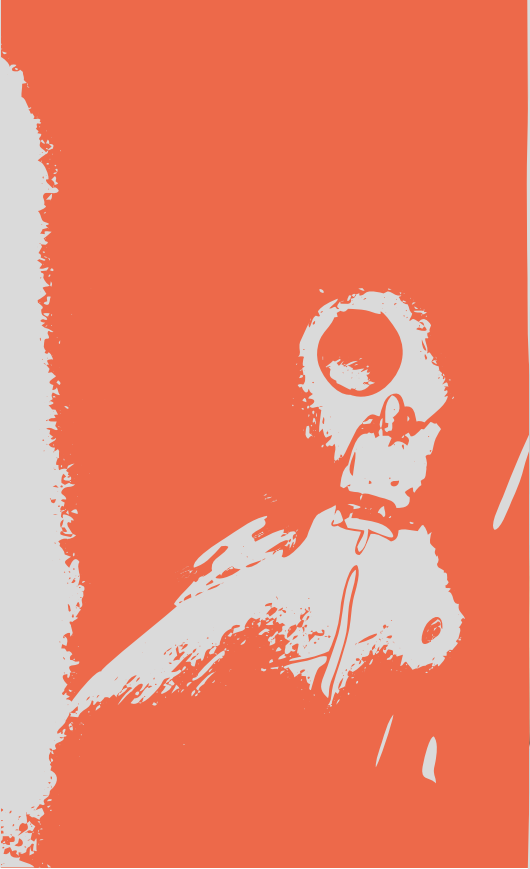
## bellini ★★★★★☾

espresso mix • darkchocolate mix •  
chocolate mix • hotchocolate mix •  
mocca rooted • bernstein mix • sandy-  
blonde rooted • champagne rooted •  
**pastelblonde rooted**





hh  
REMY  
HUMAN  
HAIR



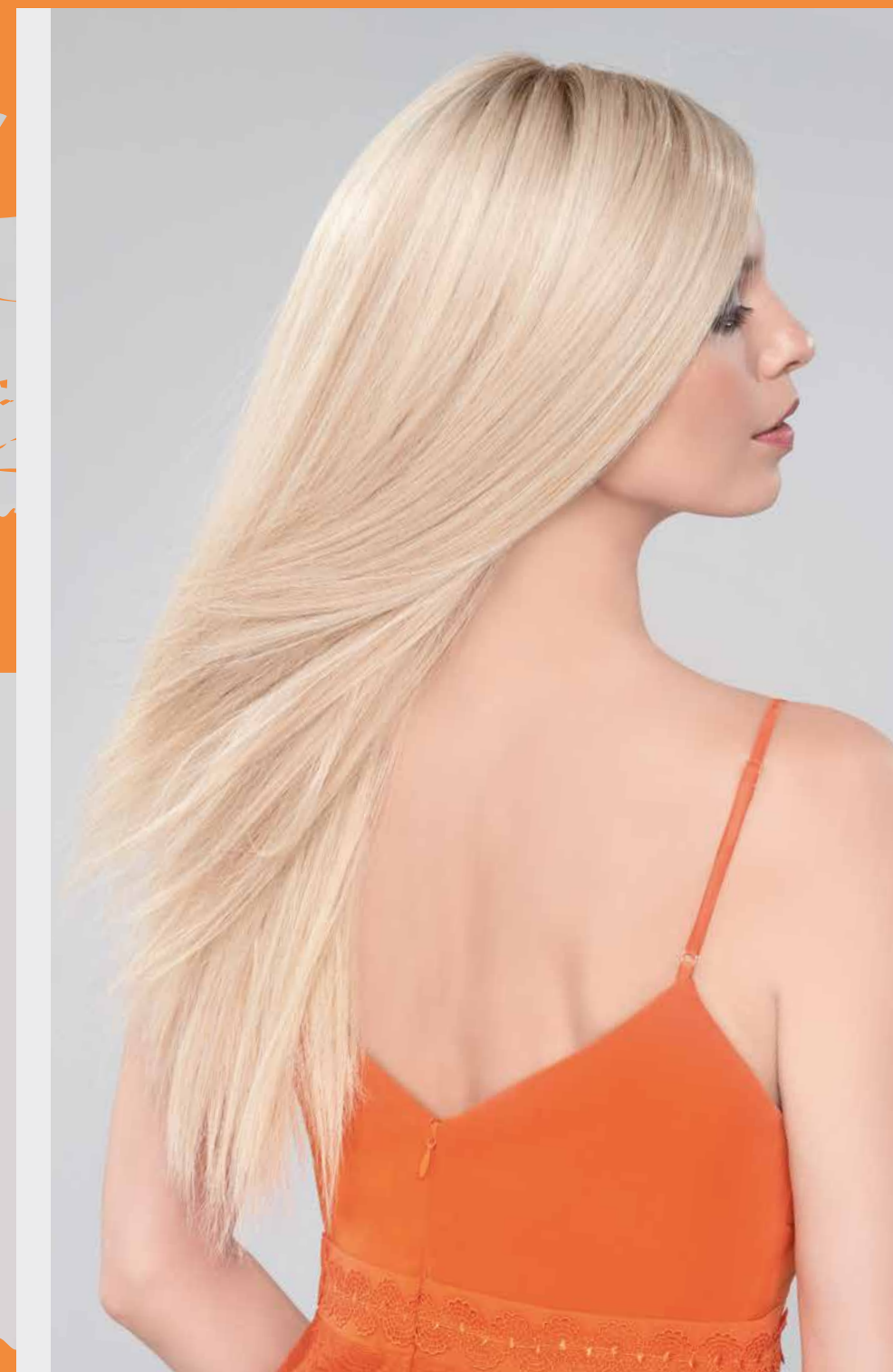
botticelli ☆☆☆☆☆

- espresso mix • darkchocolate mix • chocolate mix • **hotchocolate mix** • mocca rooted • bernstein mix • sandyblonde rooted • champagne rooted





vermeer ★★★★★



espresso mix • darkchocolate mix • chocolate mix • mocca rooted • bernstein mix • sandyblonde rooted • **champagne rooted** • cinnamon rooted

rembrandt ★★★★★



espresso mix • darkchocolate mix • chocolate mix •  
hotchocolate mix • lightbernstein rooted • sandyblonde  
rooted • champagne rooted • pastelblonde rooted



## greco ★★★★★

espresso mix • darkchocolate mix •  
chocolate mix • **mocca mix** • light-  
bernstein rooted • lighthoney rooted •  
sandyblonde mix • champagne mix





**Top Volumen.  
Traumhafte Fülle für das Haar.**  
Entdecken Sie unser gesamtes Angebot an  
Top Pieces im Volumizer-Katalog.

**Top volume. Dreamlike  
fullness for the hair.**  
Discover our entire range of top pieces  
in the Volumizer catalogue.



Volumizer **renoir**



Volumizer **klee**



Volumizer **warhol**

VOLUMIZER





# overview

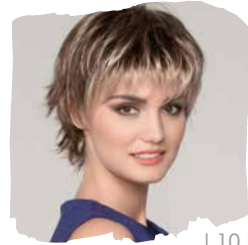
## fresh | trendy



amer | 12 |



sarria | 14 |



elba | 10 |



storia | 24 |



festa | 04 |



toscana | 06 |



lugano | 20 |



uno | 08 |



magica | 16 |

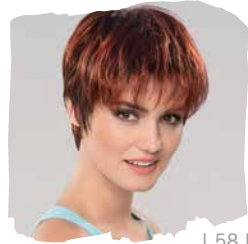


maida | 22 |

## short | sport



alegra | 34 |



corsica | 58 |



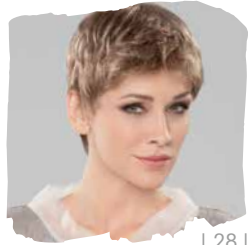
nolay | 54 |



alia | 32 |



cori | 44 |



porto | 28 |



beso | 56 |



dublin | 52 |



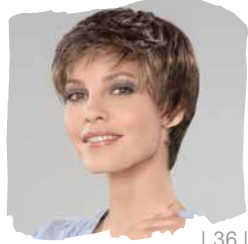
porto | 30 |



cala | 42 |



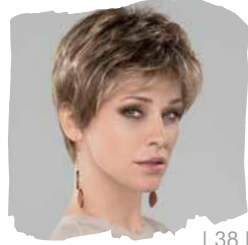
feliz | 62 |



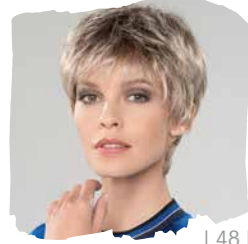
strada | 36 |



cento | 46 |



firenze | 38 |



corsica | 48 |

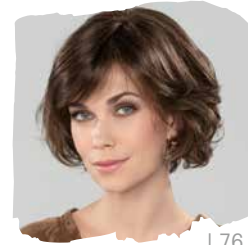


marina | 60 |

## elegant | chic



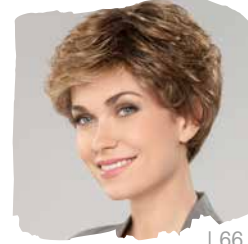
armonia | 74 |



diana | 76 |



fata | 70 |



fauna | 66 |



ribera | 68 |

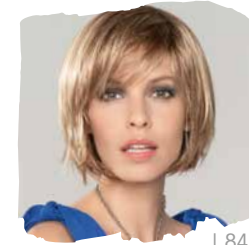


sorento | 72 |

## bob | beauty



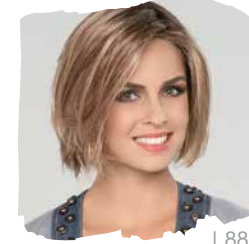
amor | 80 |



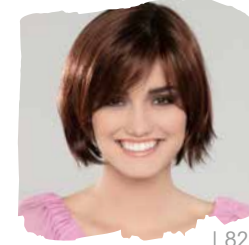
bia | 84 |



bonita | 94 |



cirella | 88 |



lucca | 82 |



prado | 86 |

## waves | long



artemide | 108 |



azzurra | 98 |



baile | 114 |



calliope | 100 |



cassana | 104 |



cielo | 110 |



fuerte | 116 |



kimera | 90 |



ninfa | 106 |



selene | 112 |



traviesa | 96 |

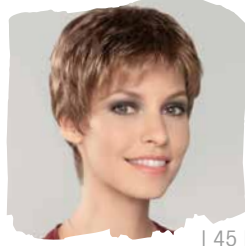
COMU  
LA  
TR

# overview

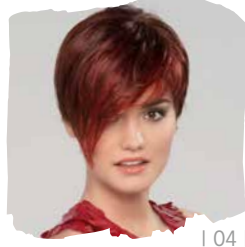
petite



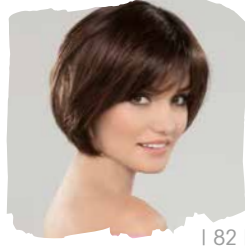
cassana | 105 |



cori | 45 |



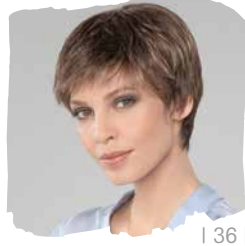
festa | 04 |



lucca | 82 |



prado | 86 |



strada | 36 |

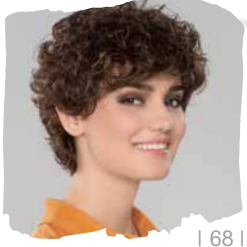
large



armonia | 74 |



feliz | 62 |



ribera | 68 |



storia | 25 |

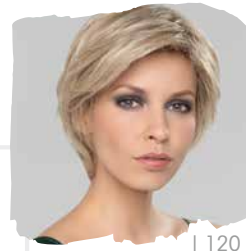


strada | 36 |



FUTURE  
HAIR

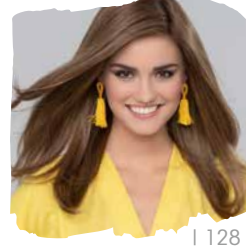
new  
TECHNOLOGY



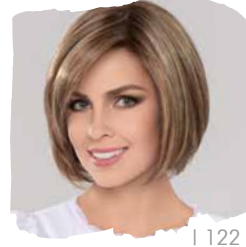
chopin | 120 |



lehar | 124 |



puccini | 128 |



ravel | 122 |



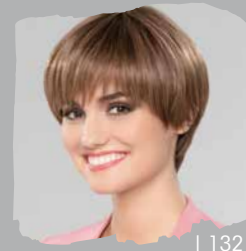
vivaldi | 126 |



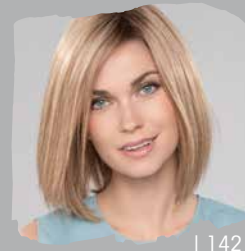
REMY  
HUMAN  
HAIR



bellini | 148 |



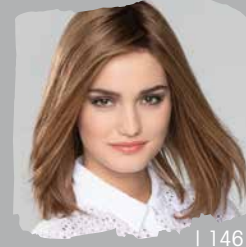
monet | 132 |



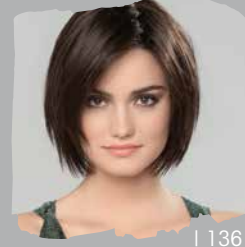
rousseau | 142 |



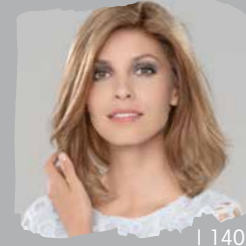
botticelli | 150 |



picasso | 146 |



verdi | 136 |



gauguin | 140 |



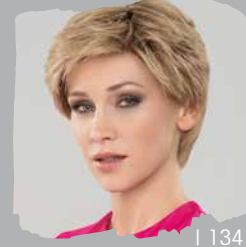
rembrandt | 154 |



vermeer | 152 |



greco | 156 |



rossi | 134 |



moliere | 138 |

## MIX

Modische Farbmischung und Strähnung  
Fashionable colour blend and high/lowlights  
Effet méché dans des coloris tendance  
Miscela di tonalità diverse alla moda  
Mezcla de colores y mechas de moda  
Модный микс цветов и мелирование

## ROOTED

Natürliche Ansatzfarbgebung  
Naturally rooted colours  
Effet racine dans un ton plus foncé  
Effetto ricrescita: la base delle meche è scura  
Raíz naturalmente más oscura  
Эффект отросших корней

## DARK

Dunklere Variante der abgebildeten Farbe  
Darker variety of pictured colour  
Variation plus foncée de la couleur  
Variante più scura del colore raffigurato  
Variante más oscura del color mostrado  
Более темная версия изображенного цвета

## LIGHT

Hellere Variante der abgebildeten Farbe  
Brighter variety of pictured colour  
Variation plus claire de la couleur  
Variante più chiara del colore raffigurato  
Versión más clara del color mostrado  
Более светлая версия изображенного цвета

## HOT

Intensivere Variante der Grundfarbe  
More vivid variety of base colour  
Variation plus intense de la couleur  
Variante più accesa del colore di base  
Variante más intensa del color básico  
Более интенсивный вариант основного цвета

STYLING  
MATERIALS



# quality

☆☆

Tresse  
Wefted  
Montage machine  
Annodatura a macchina  
Tejida a máquina  
Трессы

☆☆

Wirbel Mono + Tresse  
Including mono-crown + wefted  
Rond-point en monofilament + tresse  
Monofilamento parziale al vortice  
Monofilamento en la parte superior de la coronilla  
Частичный монофиламент только на макушке

☆☆☆

Scheitel Mono + Tresse  
Including mono parting / Weft  
Raie en monofilament + tresse  
Monofilamento parziale alla riga  
Monofilamento en la parte de la raya  
Частичный монофиламент на проборе

☆☆☆☆

Monofilament + Tresse  
Monofilament + wefted  
Monofilament + tresse  
Monofilamento + annodatura a macchina  
Monofilamento + tejida a máquina  
Монофиламент + трессы

☆☆☆☆☆

100 % handgeknüpft  
100 % handmade  
100 % fait main  
100 % fatta a mano  
100 % anudada a mano  
100 % ручная работа

☆☆☆☆☆☆

Monofilament + 100 % handgeknüpft  
Monofilament + 100 % handmade  
Monofilament + 100 % fait main  
Monofilamento + 100 % fatta a mano  
Monofilamento + 100 % anudada a mano  
Монофиламент + 100 % ручная работа

☾

Filmansatz  
Lace front  
Tulle cinéma  
Tulle cinema  
Tul frontal  
Невидимая фронтальная линия

☾☾

Erweiterter Filmansatz  
Extended lace front  
Bordure invisible extra-longue  
Tulle cinema prolungato  
Tul frontal alargado  
Удлиненная фронтальная линия



REMY  
HUMAN  
HAIR

100 % Remy Echthaar  
100 % Remy Human hair  
100 % qualité Remy Hair  
100 % Capello remy  
100 % cabello humano Remy  
100 % натуральные волосы качества Remy



FUTURE  
HAIR

Echthaar + Hitzebeständige Faser  
Human hair + heat-resistant fibres  
Cheveux naturels + fibre synthétique résistante à la chaleur  
Cabello natural + fibra sintética resistente al calor  
Capello vero + fibra sintetica resistente al calore  
Натуральные волосы + синтетическое термоволокно

# colours



black  
1.2



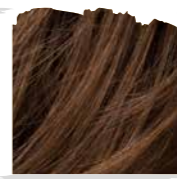
espresso  
4.6.2



darkchocolate  
6.33.4



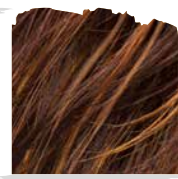
coffebrown  
8.12.6



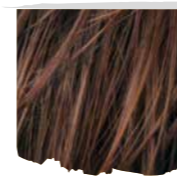
chocolate  
830.6



hotchocolate  
33.27.6



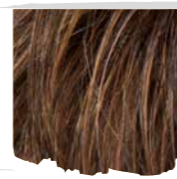
hazelnut  
830.27.6



cinnamonbrown  
30.33.27



nougat  
12.8.20



mocca  
830.12.27



hotmocca  
830.27.33



tobacco  
830.26.27



bernstein  
12.26.19



lightbernstein  
12.26.27



sandmulti  
14.24.12



darksand  
12.20.22



sand  
14.26.20



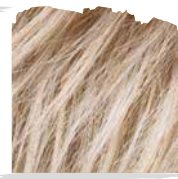
caramel  
20.26.14



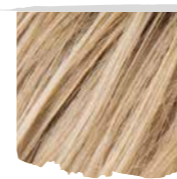
lightcaramel  
26.19.20



lighthoney  
26.25.20



sandyblonde  
16.22.14



champagne  
22.26.25



pastelblonde  
25.23.26



lightchampagne  
23.24.25



platinblonde  
1001.23.60



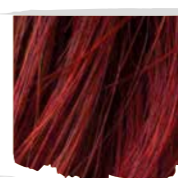
aubergine  
131.133.132



darkauburn  
33.130.2



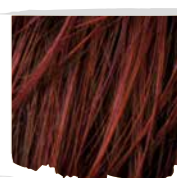
auburn  
33.130.4



hofflame  
132.133



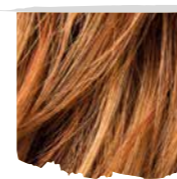
flame  
133.132.33



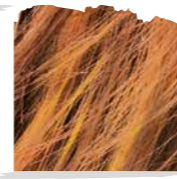
hotchilli  
130.33.4



cinnamon  
30.29.33



safranred  
29.28.33



mangored  
28.29.31



mango  
28.19.31



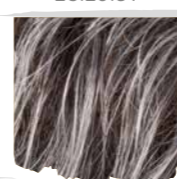
cognac  
31.19.30



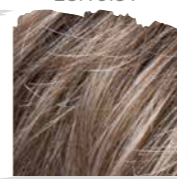
ginger  
26.27.19



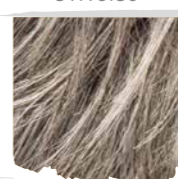
pepper  
39.44



salt/pepper  
39.51.44



smoke  
48.38.36



stonegrey  
58.51.60



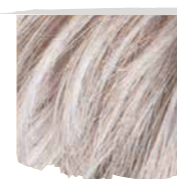
pearlblonde  
101.16.14



pearl  
101.14



darksnow  
51.60.58



snow  
60.56.58



silverblonde  
60.24



silver  
60.56



white  
60



STIMULATE